

MY-Y10 3MP Dual Band WiFi PTZ IPC Module



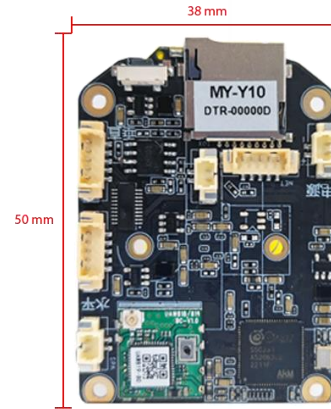
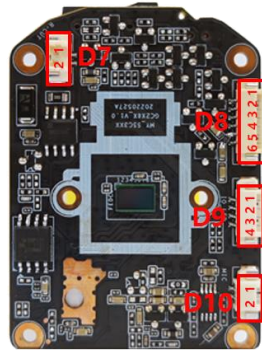
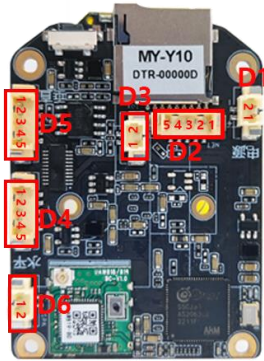
MY-Y10 is a 3MP Dual Band WiFi PTZ IPC module designed for indoor home surveillance environments or smart robotics applications. With its advanced features, it provides reliable monitoring and control, making it an ideal choice for enhancing security and automation in your home.

Key Features

- 1/3" 3MP CMOS sensor.
- Support H.265+, H.265, H.264 encoding.
- Support Soft light sensitivity: Dual-light mode, Full-color mode, Infrared mode.
- Support Dual-band Wi-Fi: 2.4 GHz and 5 GHz.
- Support Two way audio and call function
- Support Privacy Settings
- Support PTZ, PTZ Point set , Auto-Tracking .
- Support Micro SD up to 512GB and Cloud storage
- Support AC18Pro APP
- Support Hardware restore

Technical specifications:

Image sensor	
Model	MY-Y10
SOC	MSC335
Sensor	1/3" 3MP CMOS
Maximum resolution	2304 x 1296
Minimum illumination	/
Camera	
AGC	/
S/N ratio	≥52 dB
Shutter Speed	/
Wide dynamic range	/
Exposure mode	/
White balance	Auto/ Manual
Day & Night	Supported
Image resolution	
Main stream	2304×1296, 1920×1080, 1280×720
Sub stream	640×360
Audio resolution	
Audio Out/In	Supported/Wired required (8Ω1W)
Audio processing	G.711 codec standard
Protocol	
Network protocol	RTSP/DHCP/P2P
Wi- Fi	IEEE 802.11 a/b/g/n
Interface	
Network interface	10/100Mps 1*RJ45 interface
IRCUT interface	Integrated IRCUT/ Smart IR Control
Light board interface	PWM yellow light / PWM IR / CDS
Storage interface	TF card slot extension supports up to 512GB
Extra interface	Supports motorized zoom and autofocus interfaces, requiring a zoom lens, zoom control board, and zoom firmware.
Mobile APP	AC18Pro APP (iOS, Android)
General	
Power supply	DC 5V 1.25w protected from lightning
Additional functions	OSD supported/Two way audio/Support audio and video synchronously /voice alarm/ Hardware restore./ Privacy Settings
Standard	International: IEC61000-4-5 China: GB/T17626.5
Size	(L)50mm * (W)38mm
Operation temperature	-40°C~+85°C
Working humidity	≤90% RH (non-condensing)



IO	FUNCTION	PIN	PIN NAME	DESCRIPTION
D1	2 pin DC 5v	1	DC 5V+	DC 5V input
		2	GND	Ground
D2	6 pin network and reset IO	1	RX-	Network
		2	RX+	
		3	TX-	
		4	TX+	
		5	RESET	RESET
D3	2 pin Call button IO	1	IO	Singal
		2	GND	5V Motor
D4	5pin Pan control IO	1	BLUE	
		2	PINK	
		3	YELLOW	
		4	ORANGE	
		5	RED	
D5	5pin Tilt control IO	1	BLUE	5V Motor
		2	PINK	
		3	YELLOW	
		4	ORANGE	
		5	RED	
D6	2 pin Speaker IO	1	SPK+	Speaker out put (8Ω1W)
		2	SPK-	
D7	IR-CUT interface	1	IR-CUT Signal control	Output
		2		
D8	6 pin Light control IO	1	IR +	IR light +
		2	LED -	Light -
		3	WHITE +	White -
		4	POWER_LED	Power status light
		5	NETWORK_LED	Network status light
		6	GND	Ground
D9	4 pin		NULL	1-4 pin for Reserve
D10	2pin Mic IO	1	MIC+	Microphone Input
		2	MIC-	